

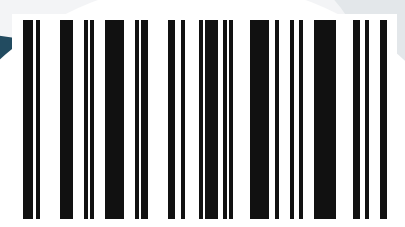
WHAT IS OMNI-CHANNEL FULFILLMENT?

Omni...
: in all ways, places, etc.
: without limits.

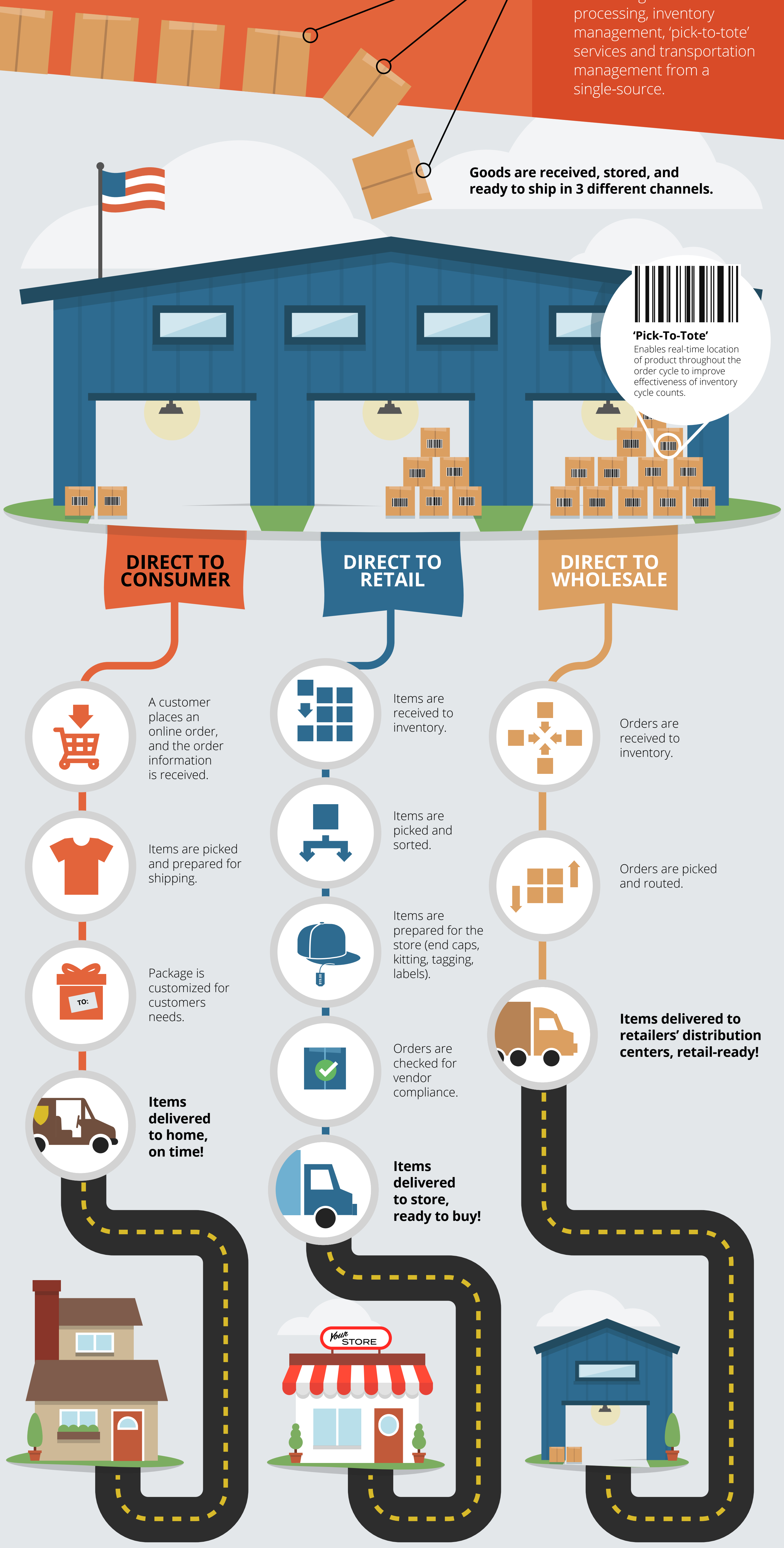
The growth of online sales has blurred the lines between traditional retail, direct-to-consumer and wholesale operations.

Omni-Channel Fulfillment is the integration of order processing, inventory management, 'pick-to-tote' services and transportation management from a single-source.

Goods are received, stored, and ready to ship in 3 different channels.



'Pick-To-Tote'
Enables real-time location of product throughout the order cycle to improve effectiveness of inventory cycle counts.



DIRECT TO CONSUMER

DIRECT TO RETAIL

DIRECT TO WHOLESALE



A customer places an online order, and the order information is received.



Items are picked and prepared for shipping.



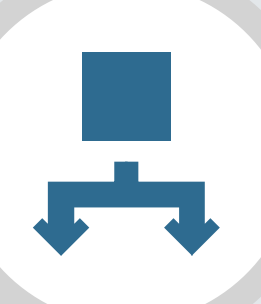
Package is customized for customers needs.



Items delivered to home, on time!



Items are received to inventory.



Items are picked and sorted.



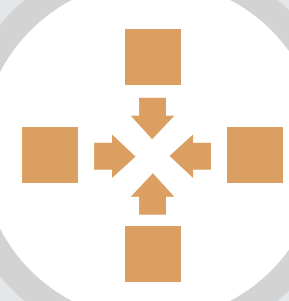
Items are prepared for the store (end caps, kitting, tagging, labels).



Orders are checked for vendor compliance.



Items delivered to store, ready to buy!



Orders are received to inventory.



Orders are picked and routed.



Items delivered to retailers' distribution centers, retail-ready!

Omni-channel fulfillment offers your customers more purchasing flexibility and ensures your products get to your customers quickly.

Managing inventory with full visibility allows you to seamlessly scale your business with reduced costs and critical technologies.

Strategic locations and integrated technologies empowers you with the business intelligence you need to streamline production and distribution.

SEE WHAT WE CAN DO FOR YOU

877.724.0106 | INFO@RBWLOGISTICS.COM